



Cuyahoga County Division of Children and Family Services  
Cynthia Weiskittel, Director

# **2016 Statistical Report**

## **January - December 2016**

**Division of Children & Family Services, 3955 Euclid Ave., Cleveland, OH 44115 (216) 431-4500**

TDD: Ohio Relay Service # is 1-800-750-0750 {NOTE: For questions about this report, you may call (216) 881-4125}

February, 2017

DCFS: Performance Evaluation & Innovation Unit

**DCFS STATISTICAL REPORT**

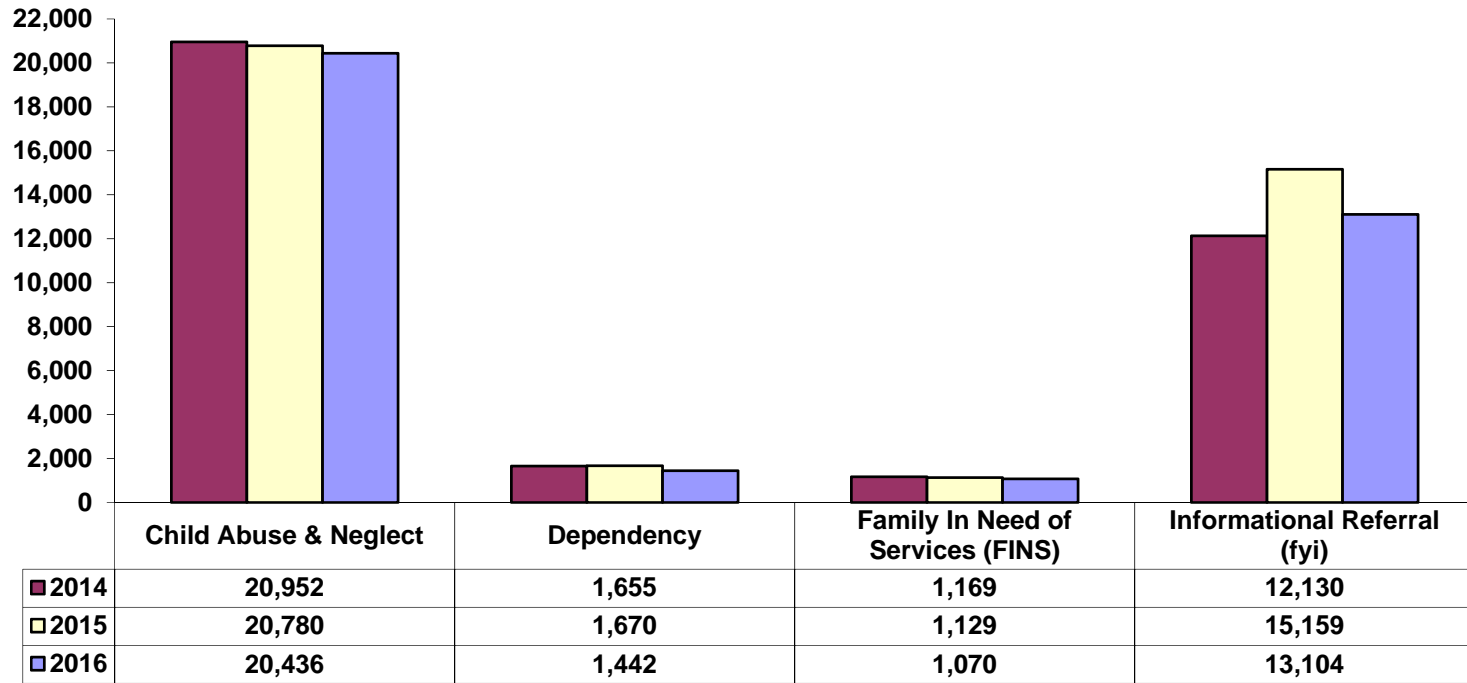
**TABLE OF CONTENTS**

REFERRALS BY CATEGORY-----	1
REFERRAL SCREENING DECISIONS-----	2
POSITIVE TOX REFERRALS-----	3
DISPOSED CHILD ABUSE & NEGLECT REFERRALS-----	4
OPEN CASES BY CATEGORY-----	5
CHILDREN RECEIVING SERVICES ON OPEN CASES-----	6
CHILDREN IN OUT-OF-HOME CARE / PLACEMENT / CUSTODY TYPES-----	7
IN COUNTY / CONTIGUOUS COUNTY / IN STATE / OUT OF STATE PLACEMENTS -----	8
CHILDREN IN OUT-OF-HOME CARE / DEMOGRAPHICS -----	9
CHILDREN WAITING FOR ADOPTION -----	10
CUSTODY EPISODES / TERMINATIONS-----	11
CHILDREN EXITING CARE BY AGE OF MAJORITY-----	12

**ABOUT THIS REPORT:**

Except where noted the source for all data used in this report is the Ohio Statewide Automated Child Welfare Information System (SACWIS) as of the last day of the reporting period. CCDCFS converted to this system on December 9th of 2008. In SACWIS data is subject to change as it is continually being corrected and updated. This may cause statistics found in previous reports to be inconsistent with statistics found in more recent reports, even when the data pertains to the same time period. The statistical report was converted from a monthly to a quarterly document beginning in 2015.

**REFERRALS BY CATEGORY  
JANUARY - DECEMBER  
2014/2015/2016**

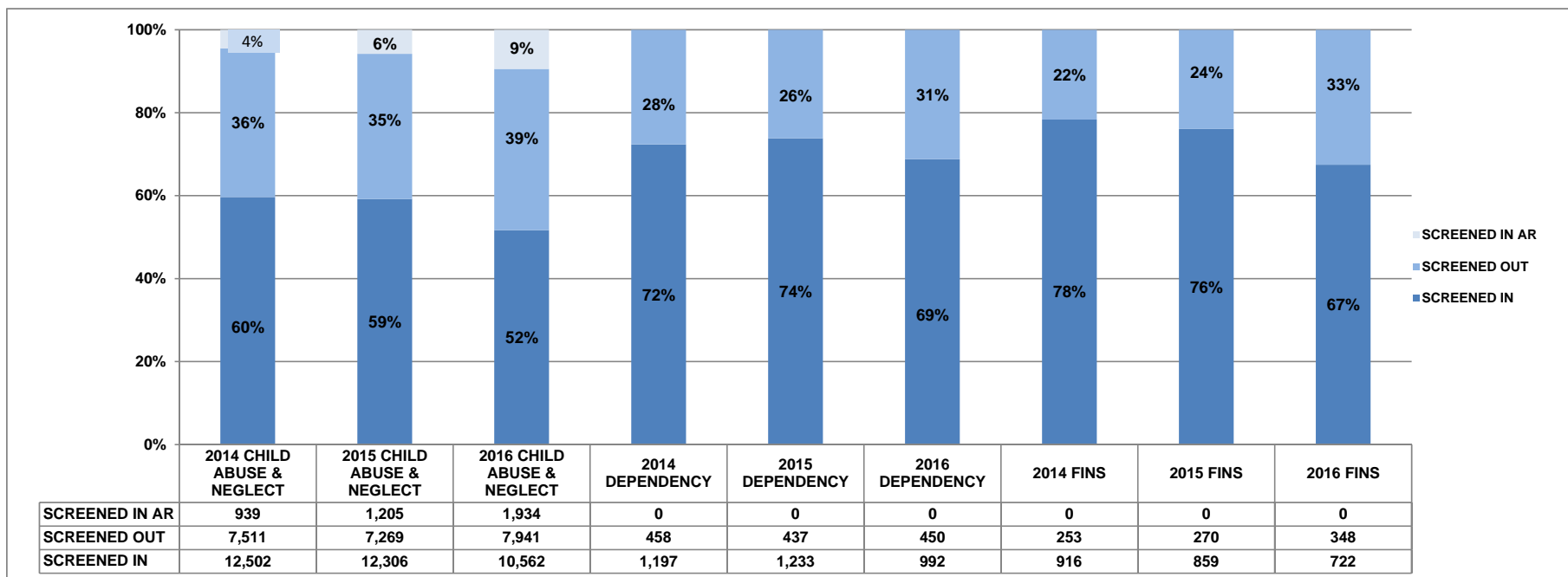


Year-to-Date 2014 = 35,906

Year-to-Date 2015 = 38,738

Year-to-Date 2016 = 36,052

**REFERRAL SCREENING DECISIONS  
JANUARY - DECEMBER  
2014 / 2015 / 2016**



**\* Count of Families With Screened In Abuse & Neglect Referral**

2014 = 9,928  
2015 = 10,045  
2016 = 9,455

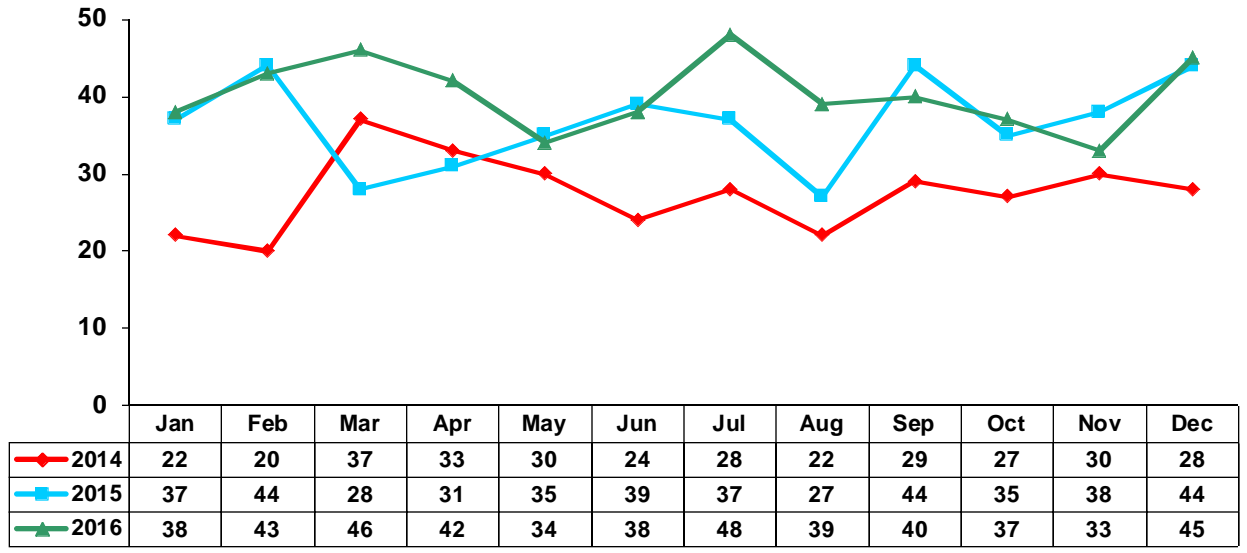
**\* Count of Families With Screened In Dependency Referral**

2014 = 1,086  
2015 = 1,104  
2016 = 914

**\* Count of Families With Screened In FINS Referral**

2014 = 826  
2015 = 780  
2016 = 665

**POSITIVE TOX REFERRALS BY MONTH  
2014 THROUGH 2016**

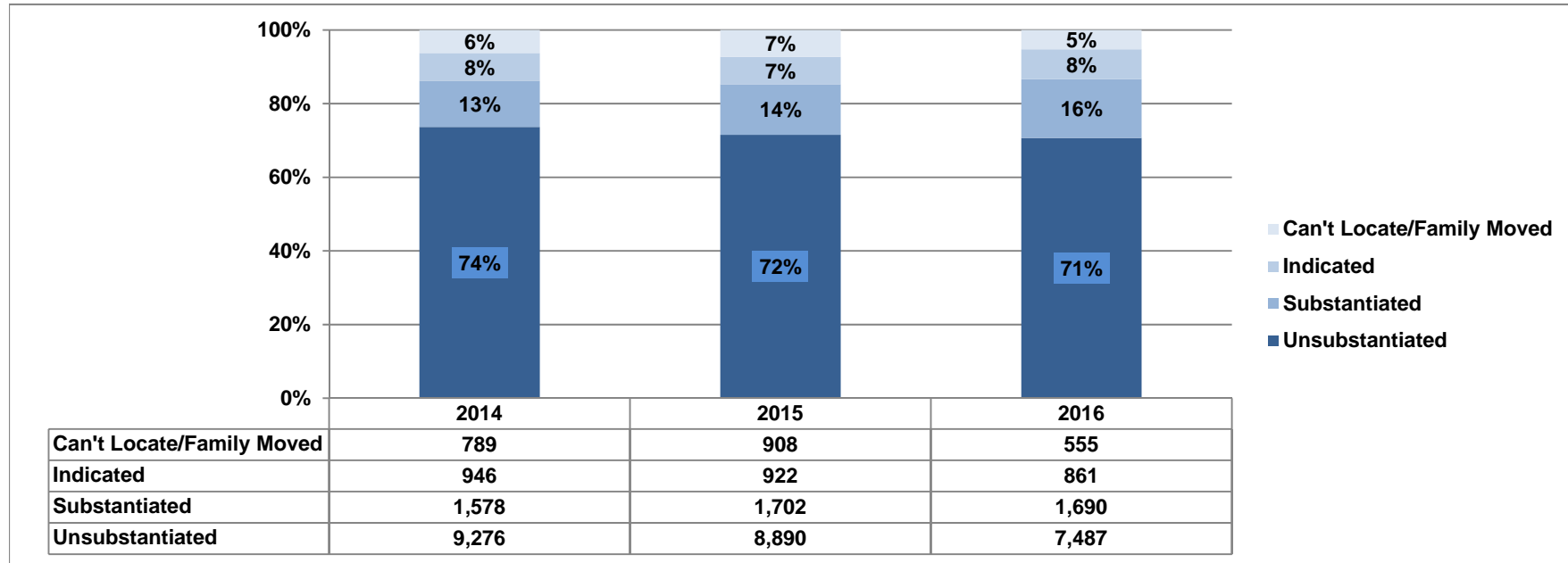


YEAR TOTAL 2014 = 330

YEAR TOTAL 2015 = 439

YEAR TOTAL 2016 = 483

**DISPOSED CHILD ABUSE & NEGLECT REFERRALS  
ABUSE NEGLECT REFERRALS RECEIVED JANUARY - DECEMBER  
2014 / 2015 / 2016**

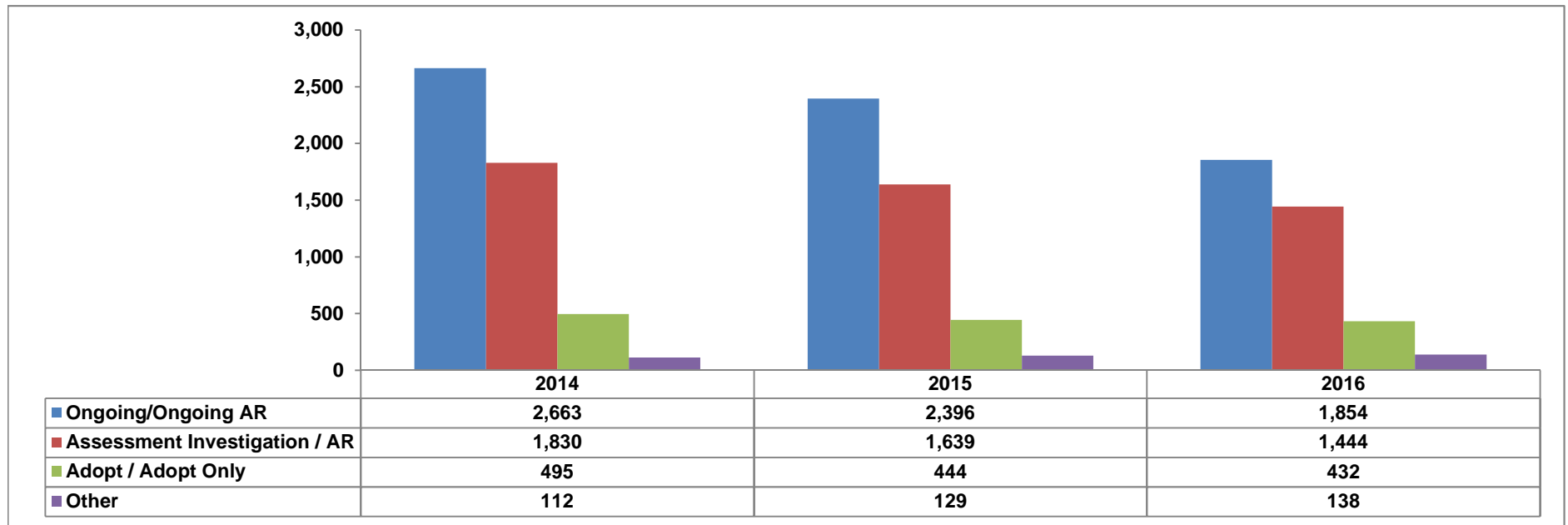


**\*\* Children With Substantiated Abuse & Neglect  
by Allegation Type (2016)**

Emotional Maltreatment = 19  
 Medical Neglect = 57  
 Neglect = 966  
 Physical Abuse = 1,327  
 Physical Abuse Shaken Baby 1 = 1  
 Sexual Abuse = 103

**\* Families With Substantiated Abuse & Neglect Referral (2016) = 1,546  
 \* Count of Children With Substantiated Abuse & Neglect Referrals (2016) = 2,319**

**OPEN CASES  
DECEMBER 31st  
2014/2015/2016**



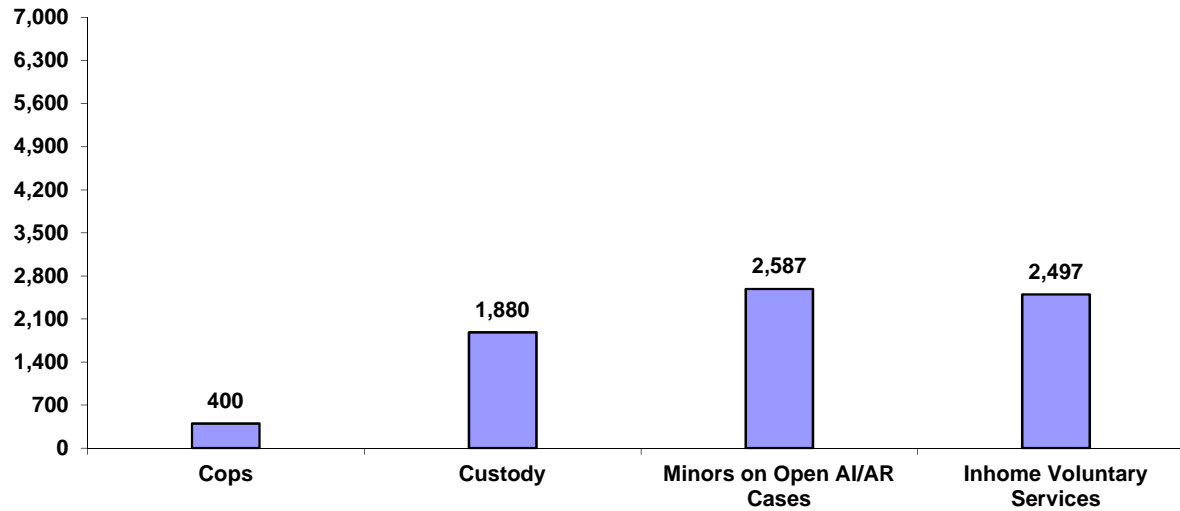
**Total Open Cases 12/31/2014 = 5,100**

**Total Open Cases 12/31/2015 = 4,608**

**Total Open Cases 12/31/2016 = 3,868**

\* Other includes: ICAMA (Interstate compact on adoption & medical assistance), ICPC (Interstate compact on placement of children) and emancipated youth

**CHILDREN RECEIVING SERVICES ON OPEN CASES  
DECEMBER 31, 2016**

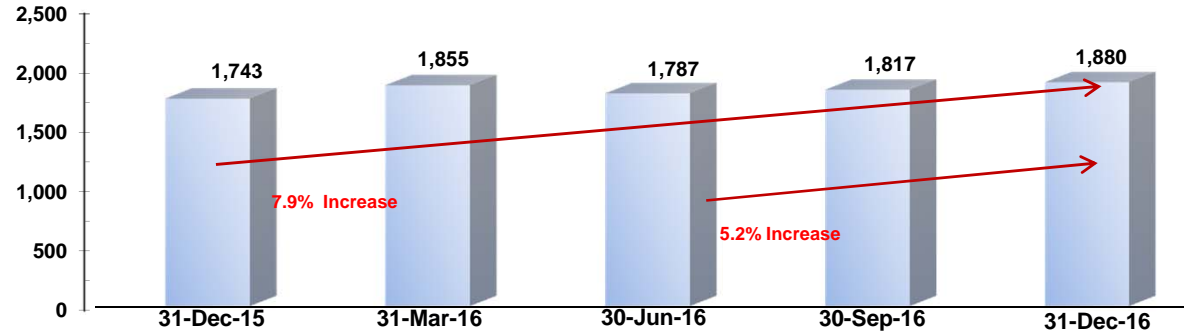


- \* COPS = children in court ordered protective supervision
- \* Custody = children in out of home care and legal custody of DCFS
- \* Minors on open AI/AR cases = child is not in custody or protective supervision.  
Child is active case participant in open AI/AR case
- \* Inhome Voluntary Services = children who are active participants in open cases, are listed on case plan and who are not in court ordered protective supervision and are not in custody of DCFS.



**CHILDREN IN OUT-OF-HOME CARE  
PLACEMENT / CUSTODY TYPES**

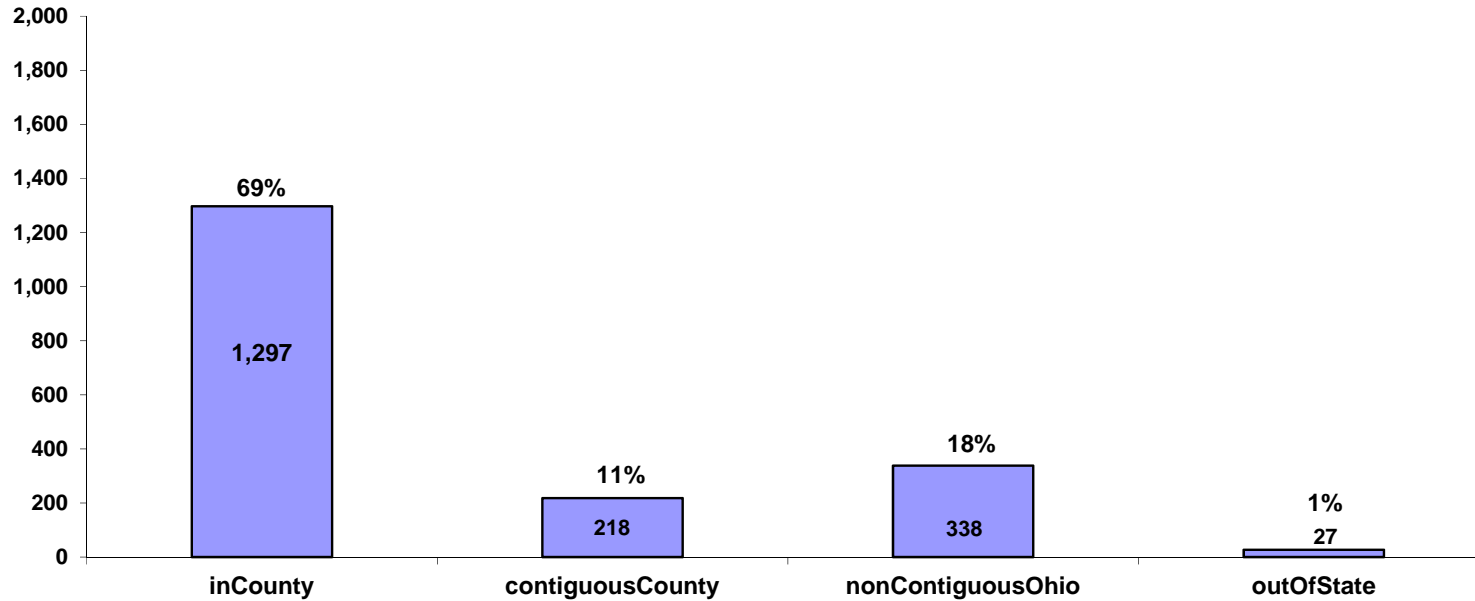
Date	Adoptive Home		Relative / Fictive Kin		DCFS Foster Home		Network Foster Home		Group Home		Certified Residential Center		Independent Living		Other *		Total N Children In Placement
	Count	% Of Total	Count	% Of Total	Count	% Of Total	Count	% Of Total	Count	% Of Total	Count	% Of Total	Count	% Of Total	Count	% Of Total	
31-Dec-15	53	3%	401	23%	235	13%	824	47%	54	3%	126	7%	25	1%	25	1%	1,743
31-Mar-16	86	5%	371	20%	324	17%	806	43%	54	3%	154	8%	27	1%	33	2%	1,855
30-Jun-16	68	4%	443	25%	221	12%	824	46%	53	3%	139	8%	24	1%	15	1%	1,787
30-Sep-16	84	5%	450	25%	183	10%	859	47%	45	2%	152	8%	23	1%	21	1%	1,817
31-Dec-16	85	5%	500	27%	200	11%	846	45%	54	3%	151	8%	27	1%	17	1%	1,880



31-Dec	2015	
Agency Legal Status	N	%
Emergency Custody	272	16%
Temporary Custody	822	47%
Permanent Custody	568	33%
PPLA	64	4%
Other	17	1%

31-Dec	2016	
Agency Legal Status	N	%
Emergency Custody	443	24%
Temporary Custody	803	43%
Permanent Custody	557	30%
PPLA	47	3%
Other	30	2%

**IN COUNTY , CONTIGUOUS COUNTY, IN STATE, OUT OF STATE PLACEMENTS  
DECEMBER 31, 2016**

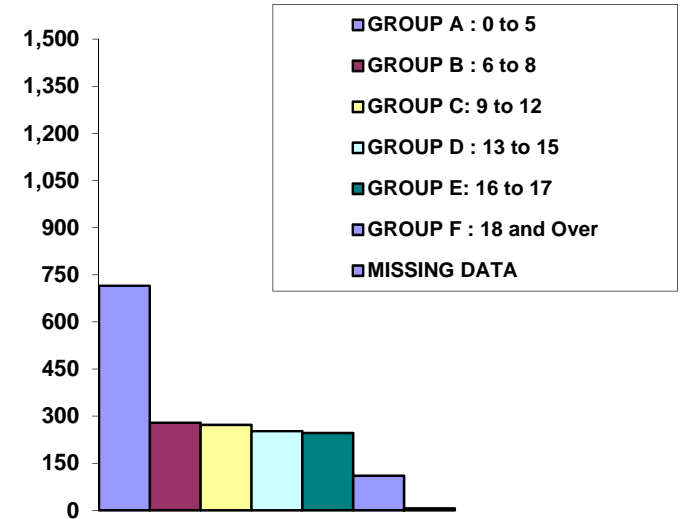
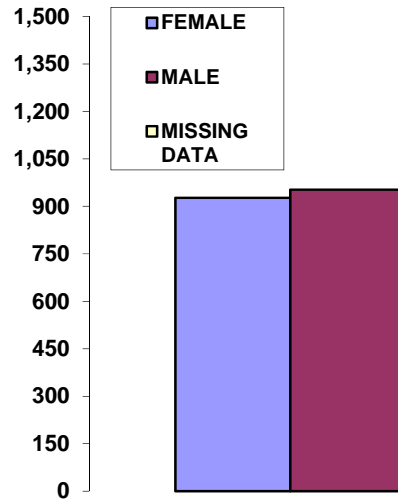
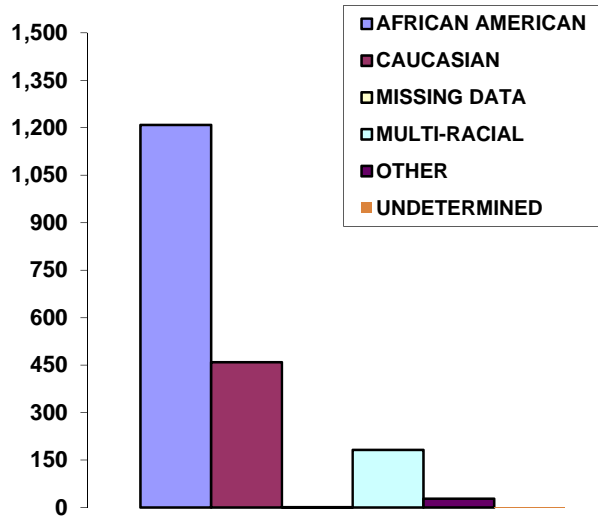


**OUT OF COUNTY PLACEMENTS AS OF 12/31/2016**

	Adoptive	Relative / Fictive Kin	Residential Center	Emergency Shelter	Foster Home	Group Home	Detention Facility	Independent Living	Licensed Medical Facility	TOTAL
OUT OF COUNTY / IN OHIO	38	57	59	0	393	5	2	1	1	556
OUT OF STATE	10	4	5	0	8	0	0	0	0	27

\* Contiguous counties include: Geauga, Lake, Lorain, Medina, Portage, Summit  
 \* 15 of the out-of-county foster home placements are relative/fictive kin providers

DEMOGRAPHICS: CHILDREN IN OUT-OF-HOME CARE  
DECEMBER 31, 2016



Race	Count	% Of Total
AFRICAN AMERICAN	1,209	64%
CAUCASIAN	459	24%
MISSING DATA	1	0%
MULTI-RACIAL	182	10%
OTHER	28	1%
UNDETERMINED	1	0%
<b>Total</b>	<b>1,880</b>	<b>100%</b>

Gender	Count	% Of Total
FEMALE	927	49%
MALE	953	51%
MISSING DATA	0	0%
<b>Total</b>	<b>1,880</b>	<b>100%</b>

Age Group	Count	% Of Total
GROUP A : 0 to 5	715	38%
GROUP B : 6 to 8	279	15%
GROUP C : 9 to 12	272	15%
GROUP D : 13 to 15	252	13%
GROUP E : 16 to 17	246	13%
GROUP F : 18 and Over	110	6%
MISSING DATA	6	0%
<b>Total</b>	<b>1,880</b>	<b>100%</b>

Race / 2015	% Of Total 2015
AFRICAN AMERICAN	65%
CAUCASIAN	27%
MULTI-RACIAL	7%
OTHER	1%
UNDETERMINED	0%

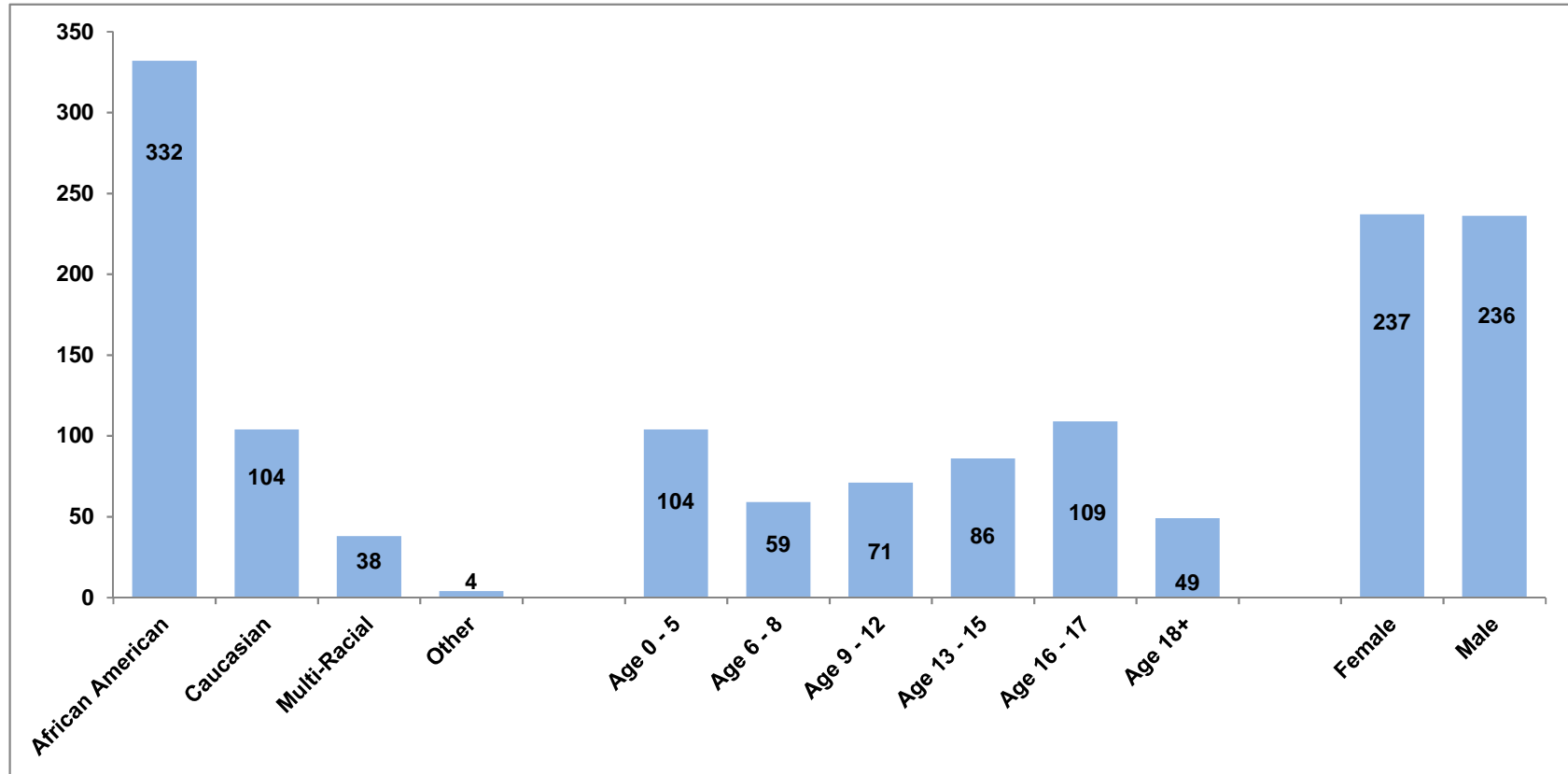
Gender / 2015	% Of Total 2015
FEMALE	48%
MALE	52%
MISSING DATA	0%

Age Group / 2015	% Of Total 2015
GROUP A : 0 to 5	37%
GROUP B : 6 to 8	12%
GROUP C : 9 to 12	13%
GROUP D : 13 to 15	14%
GROUP E : 16 to 17	15%
GROUP F : 18 and Over	9%
MISSING DATA	0%

\* Race for persons under age 18 / Cuyahoga County  
53% Caucasian / 37% African American / 10% Other - more than 1 race

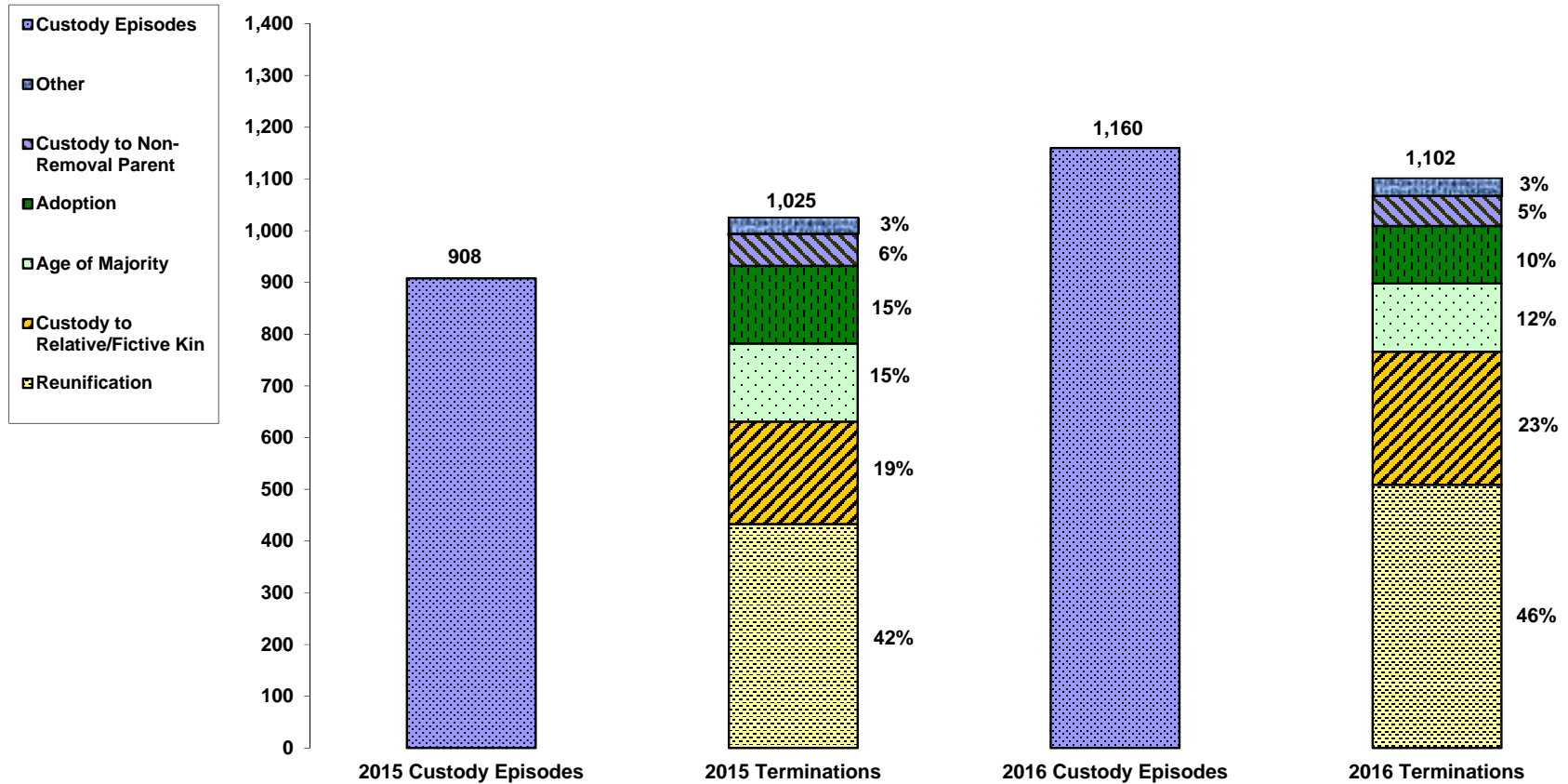
\* Source: U.S Bureau of the Census, 2010 Census, Summary File 1, PCT12A, PCT12B, PCT12C, PCT12D, PCT12E, PCT12F, PCT12G, and PCT12H.

### CHILDREN WAITING FOR ADOPTION DECEMBER 31, 2016



\* Count of children in permanent custody status who are not placed in an adoptive home

**CUSTODY EPISODES / TERMINATIONS  
JANUARY - DECEMBER  
2015 / 2016**



	Reunification	Custody to Relative / Fictive Kin	Age of Majority	Adoption	Custody To Non-Removal Parent	* Other
2015	433	198	151	150	64	29
2016	509	257	132	111	59	34

\* Other includes, Child AWOL > 30 days, child fatality, and custody to another agency.

**TOTAL # of CHILDREN EXITING CUSTODY BY AGE OF MAJORITY  
BY FINAL CUSTODY TYPE / AGE AT EPISODE BEGINNING / LENGTH OF STAY  
JANUARY - DECEMBER 2016**

Month	Permanent Commitment	PPLA	Other	Total # Children Exiting by Emancipation For Month
January	4	2	5	11
February	8	2	2	12
March	5	1	5	11
April	3	2	1	6
May	4	0	7	11
June	5	4	7	16
July	3	2	3	8
August	15	4	5	24
September	5	4	3	12
October	4	1	4	9
November	6	3	1	10
December	0	1	1	2
<b>YTD Total</b>	<b>62</b>	<b>26</b>	<b>44</b>	<b>132</b>

\* Number of children exiting by age of majority in 2015 = 151

**Age of Children Who Exited by Emancipation  
At the Time Custody Episode Began**

Age at Custody Start	Count	%
Under Age 12	39	30%
Age 13 to 14	28	21%
Age 15 to 16	31	23%
Age 17 or >	34	26%
<b>Total</b>	<b>132</b>	

**Number of Custody Months For Children  
Exiting By Age of Majority**

Months in Custody	Count	%
0-12	24	18%
13-24	19	14%
25-36	8	6%
37 or >	81	62%
<b>Total</b>	<b>132</b>	

NOTE: count for past months are updated with each new report as SACWIS historical data may change causing data to differ from those in previous versions of this report.